

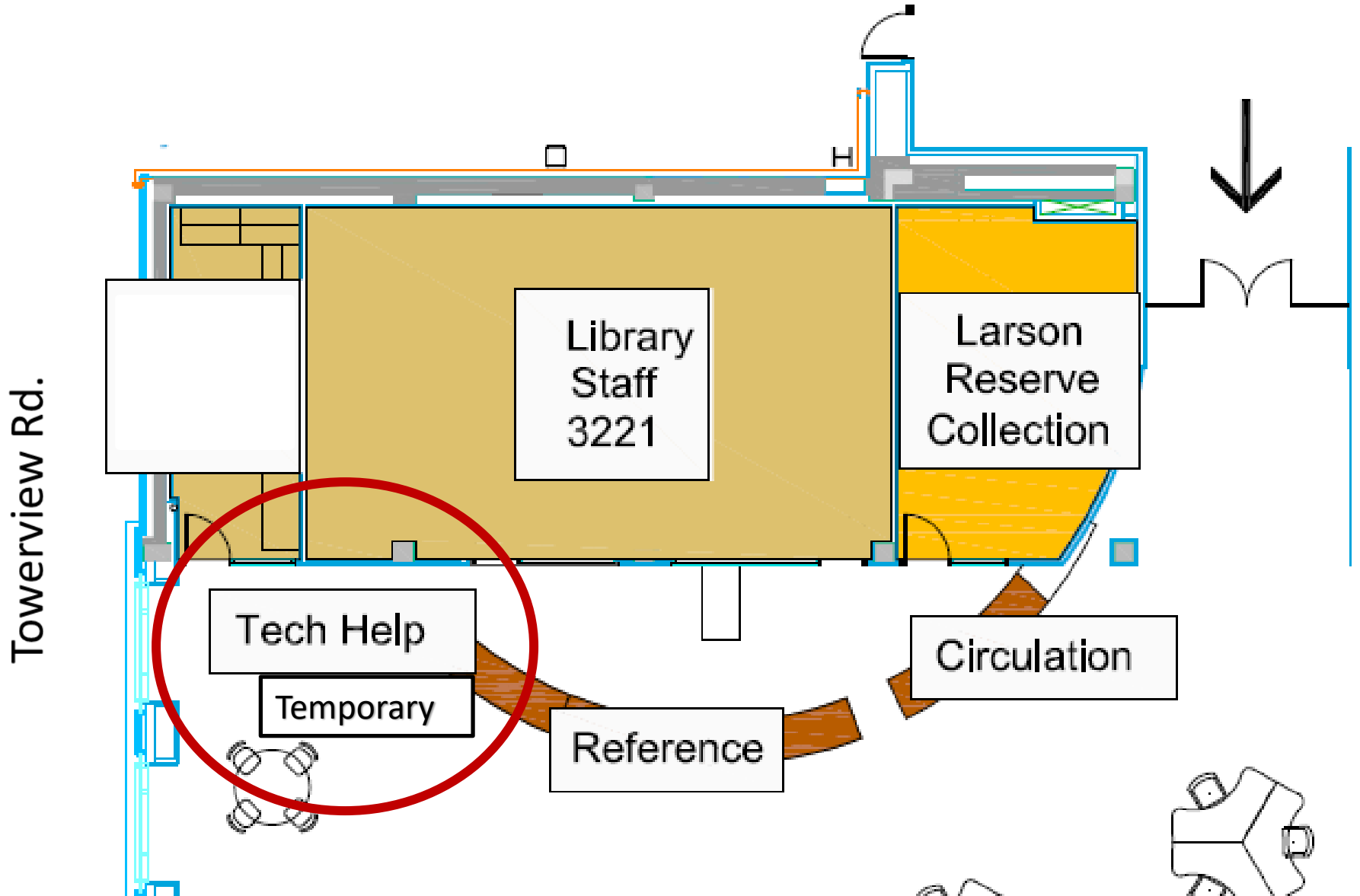
# Introduction to Technology at Duke Law

Wayne Miller

Associate Dean for Academic Technologies

# DUKE LAW

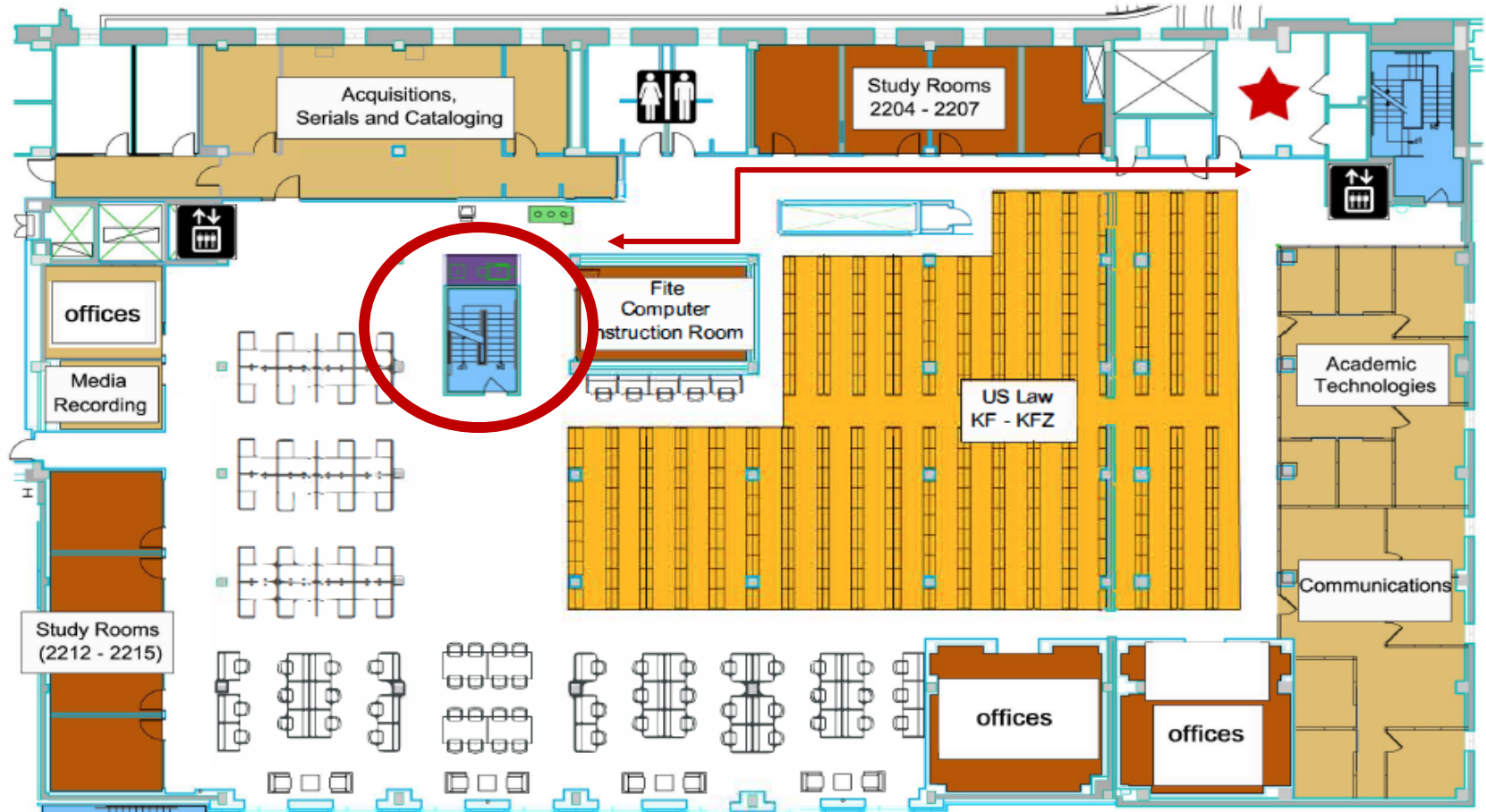
# Getting Tech Help



Technology Help Desk ★ is now on

# level 2

room 2209



Towerview Rd.

# DUKE LAW

# (AcTech) Help Desk

**Rochelle Newton**



**Jason Grady**



**Plus student  
workers and  
interns**

**Hiroki Nishiyama**



**Dan Gitomer**



**Brian Abbott**



## Things we're going to do today

- Check in on NetID and multi-factor authentication
- Get on Dukeblue/Eduroam Wi-Fi network
- Do you need anti-virus? If so, install
- Install ePrint printing software – for *free*\* black & white printing
- Install VPN
- Check your Duke email box
- Check your Sakai site
- Record your name pronunciation in the Student Directory

To get started, use the Dukevisitor  
Wi-Fi network

- *Don't rely on Dukevisitor*
- Use Dukeblue or Eduroam for day-to-day

## NetID password and Duo authentication...

- <https://oit.duke.edu/selfservice>
- Choose Multi-factor authentication
- Set up a mobile phone ... install and run app, & scan QR code in the help page
- Duo will then call or text app, or you can use the code given in the app



## Get your computer on Dukeblue Wi-Fi network

- <https://dukeblue.duke.edu>
- <https://dukeblue.duke.edu/eduroam> for travel



Do you need anti-virus? If so, install

- Windows 10 – no install needed
- Windows 7 - <https://www.avast.com/en-us/free-antivirus-download>
- Mac - <https://www.avast.com/en-us/free-mac-security>

Install ePrint printing software – for free\* black & white printing

<https://law.duke.edu/actech/download/dlrestricted/>

(Click on download link)

- Print to ePrint Law B&W, then enter your NetID
- Go to any law ePrint printer
- Start ePrint by touching its screen icon
- Swipe your DukeCard or touch a configured mobile device

## Free black & white printing explained

- \$100 quota per semester for the B&W printers in the law school
- You *also* have \$32 quota in the campus library in Perkins
- \$0.04 per sheet of paper, whether you print one side or two (please print on both side!)
- If you happen to run low on your quota (less than \$10), we have a form to request another \$10:
  - [https://duke.qualtrics.com/jfe/form/SV\\_5bdELMCTTfzwHeR](https://duke.qualtrics.com/jfe/form/SV_5bdELMCTTfzwHeR)

## Install VPN – Cisco AnyConnect

- <https://portal.duke.edu>
- Lets your computer act like it's on campus – when it's not
- Mac users – *follow the link to the Duke Software site to download*
- After installing, enter “vpn.duke.edu” if the connection box is blank

## Check your Duke email box

- <https://mail.duke.edu>
- Note: all your Duke addresses go to this box
- Change your email aliases at:
  - <https://oit.duke.edu/selfservice>
- Use [NetID@duke.edu](mailto:NetID@duke.edu) to configure mobile apps

## Check Sakai

- <https://sakai.duke.edu>
- Since you're not registered yet, you won't see any course sites!
- When you do, look in Resources for documents and class recordings

## Check your student directory entry and add your name pronunciation

- <https://law.duke.edu/studir>
- Click on the View My Profile button
- Your DukeCard photo will be automatically uploaded soon
- Test recording your name pronunciation – do it again when you are in a quiet place!

## As time allows

- If you don't have Office 2016, I would go ahead and get your "graduation copy" from <https://software.duke.edu>
- Check out Duke Box (<https://box.duke.edu>) for cloud-based file storage – set up Box sync on your computer and mobile device