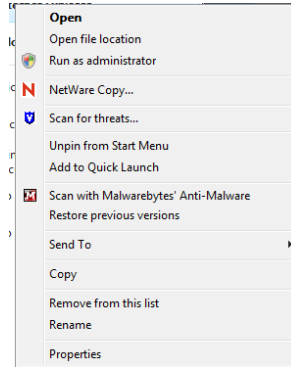


# How to Install Novell iPrint Client for Windows 7

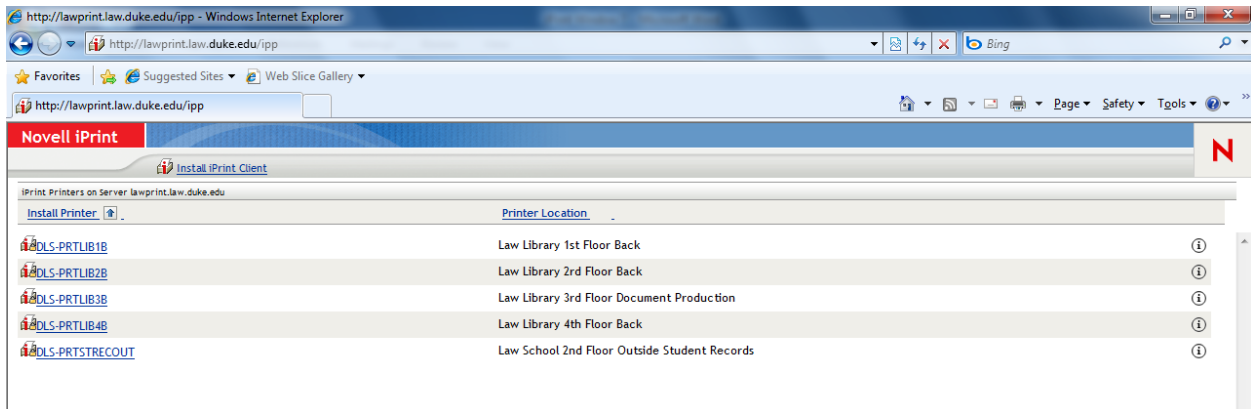
(We recommend using Internet Explorer)

1. Click “Start” “All Programs” and right click on “Internet Explorer.” Select “Run as administrator”



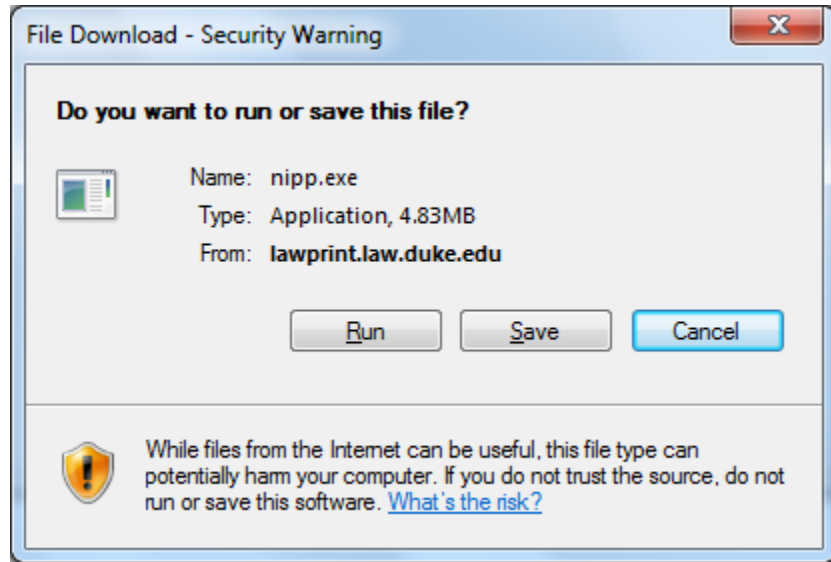
2. Go to <http://lawprint.law.duke.edu/ipp>

3. Click on “Install iPrint Client”

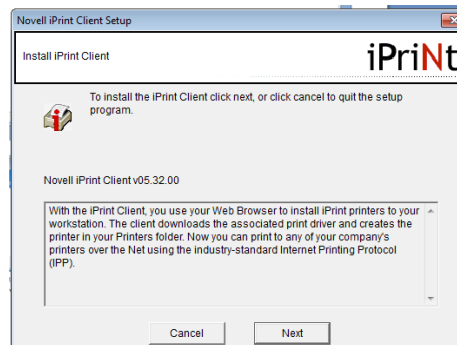


4. Click the link “install the iPrint Client.”

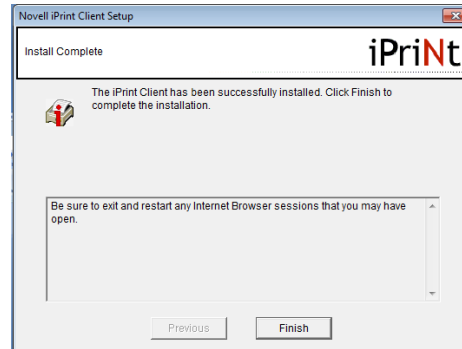
5. Click “Run” on the pop up window below



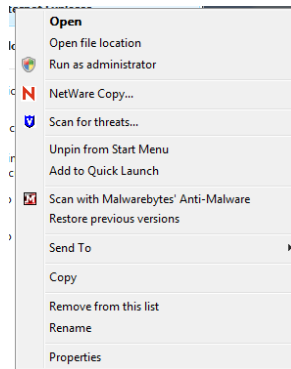
6. The wizard below will appear to install the iPrint Client. Click “Next.”



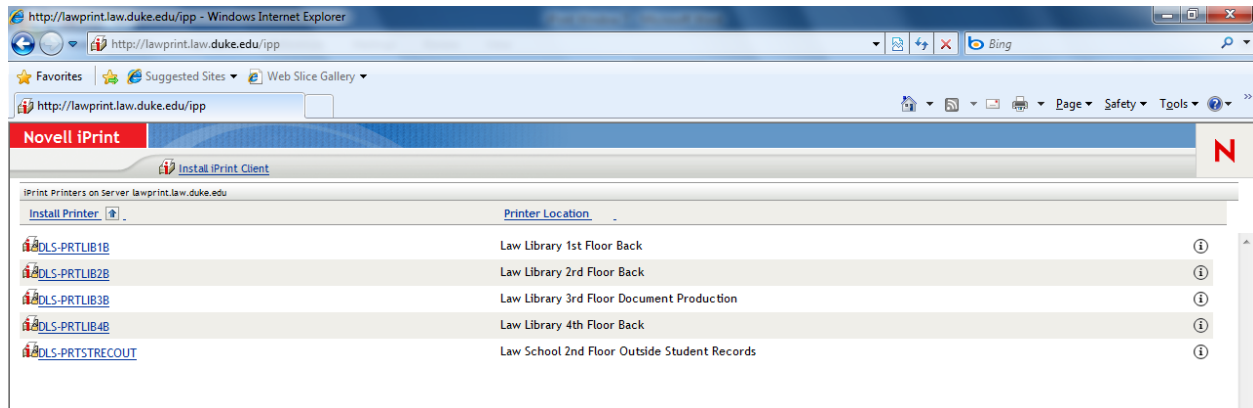
- Once the components have been installed, the screen below will appear. Click “Finish.”



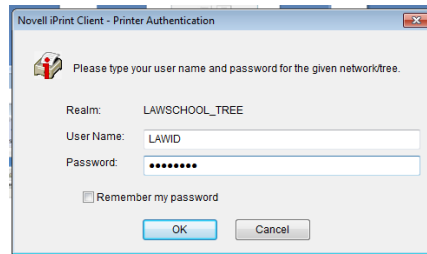
- Close the browser window
- Click “Start” “All Programs” and right click on “Internet Explorer.” Select “Run as administrator”



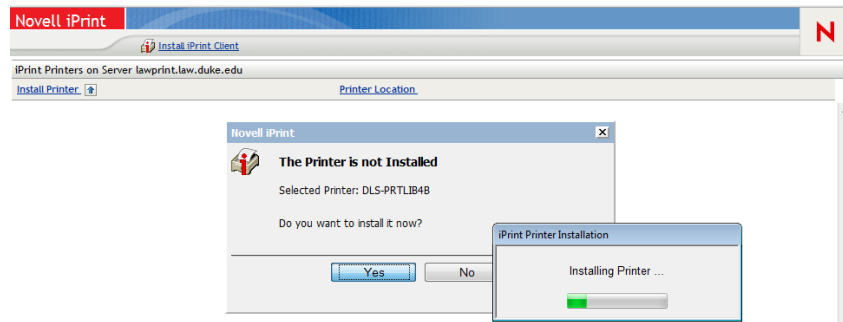
- Go to <http://lawprint.law.duke.edu/ipp>
- Click on the link of the printer you would like to install (i.e. DLS-PRTL4B)



12. Enter your Novell (lawID) credentials, then click “OK.”

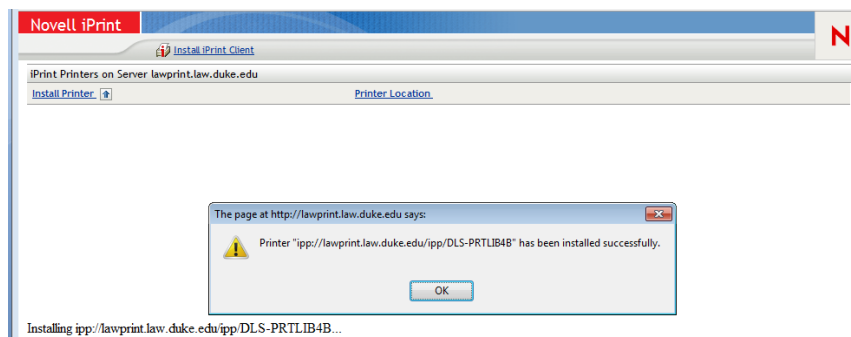


13. Confirm the installation of the printer by clicking “Yes”



14. Once the printer has been installed, a confirmation window will be displayed. Click “OK”.

*(It is ok to close Internet Explorer)*



15. The installation can be verified by looking at your list of printers.

