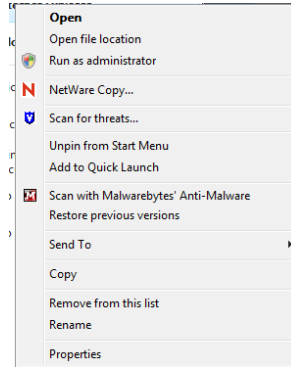


How to Install Novell iPrint Client for Windows Vista

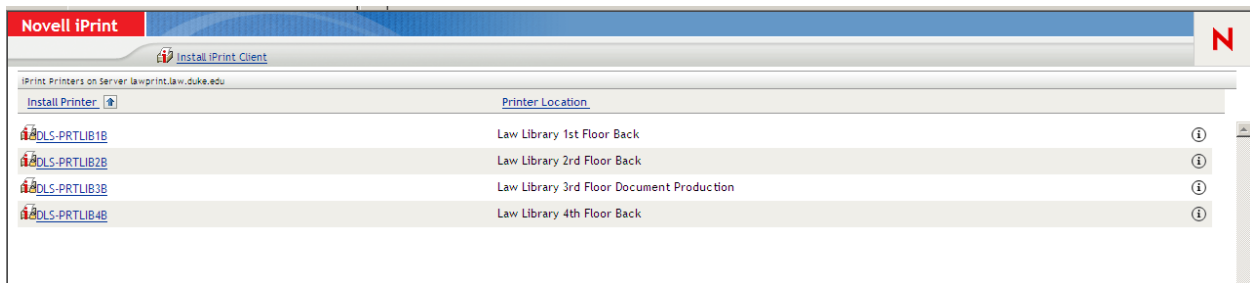
(We recommend using Internet Explorer)

1. Click “Start” “All Programs” and right click on “Internet Explorer.” Select “Run as administrator”

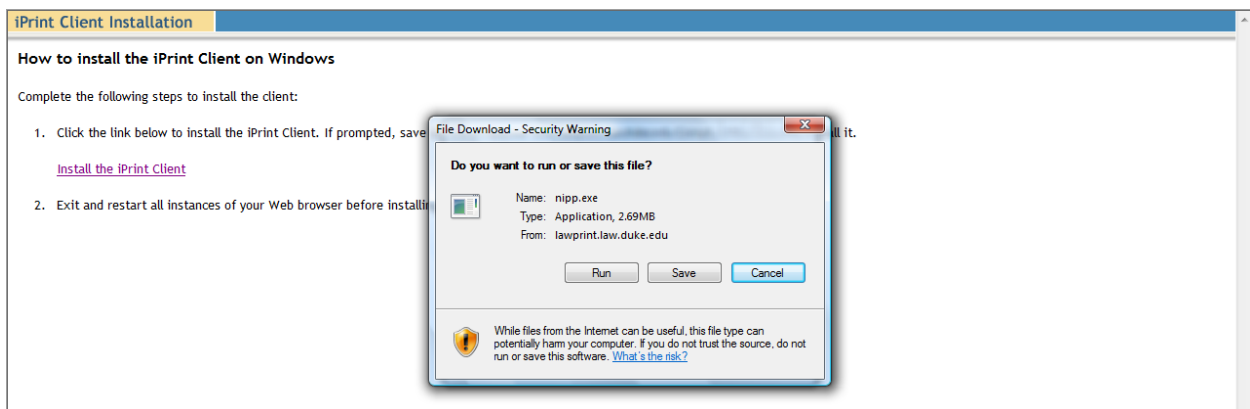


2. Go to <http://lawprint.law.duke.edu/ipp>

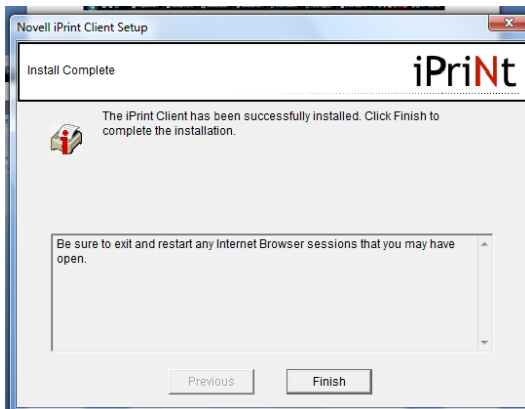
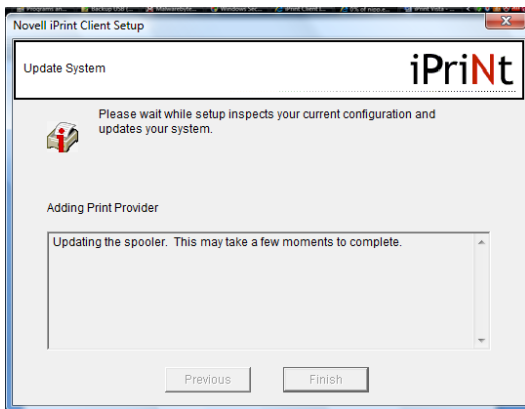
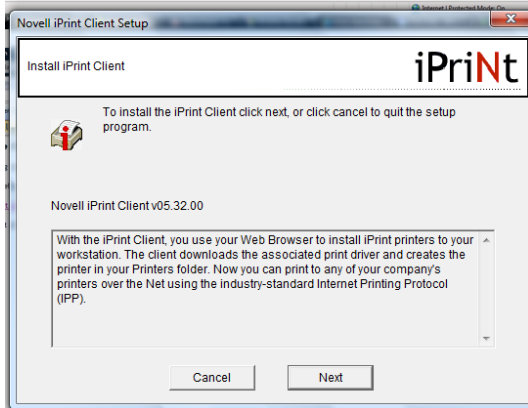
3. Click on “Install iPrint Client”



4. Click “Run”

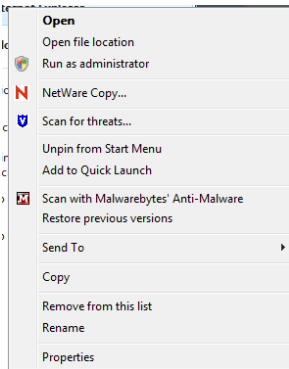


5. The iPrint Client wizard will appear. Click “Next” then “Finish.”



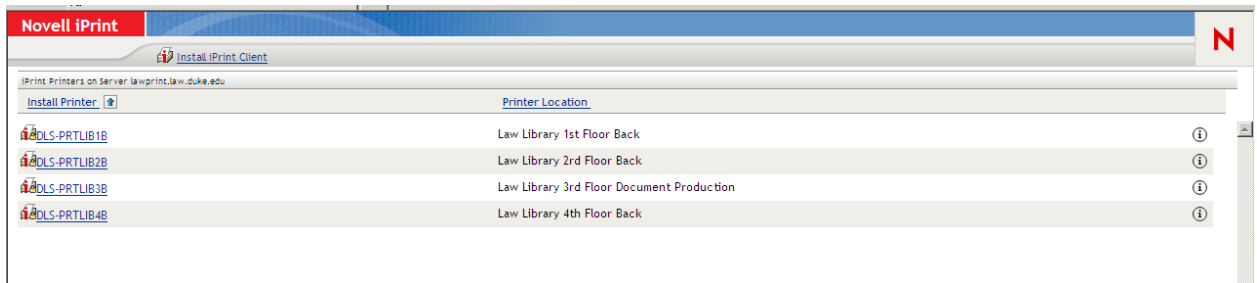
6. Close Internet Explorer

7. Click “Start” “All Programs” and right click on “Internet Explorer.” Select “Run as administrator”

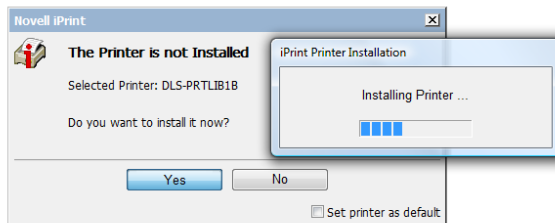


8. Go to <http://lawprint.law.duke.edu/ipp>

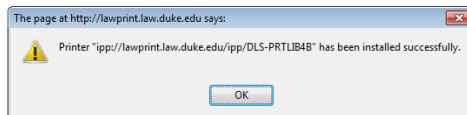
9. Click on the link of the printer you would like to install (i.e. DLS-PRTL3B)



10. Select “Yes” to install the selected printer.



11. A confirmation window will appear that printer has been installed.



12. The installation can be verified by looking at your list of printers.

