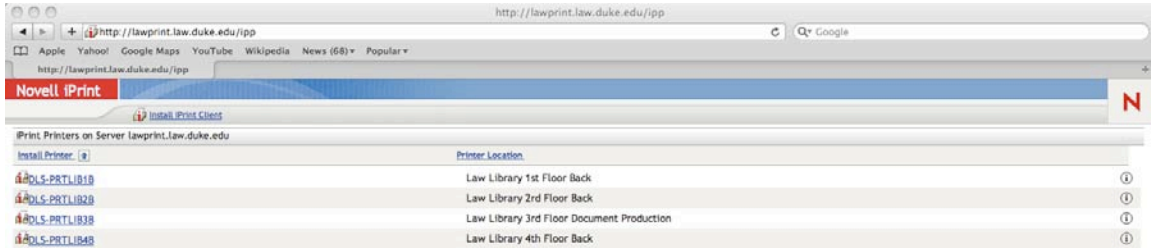
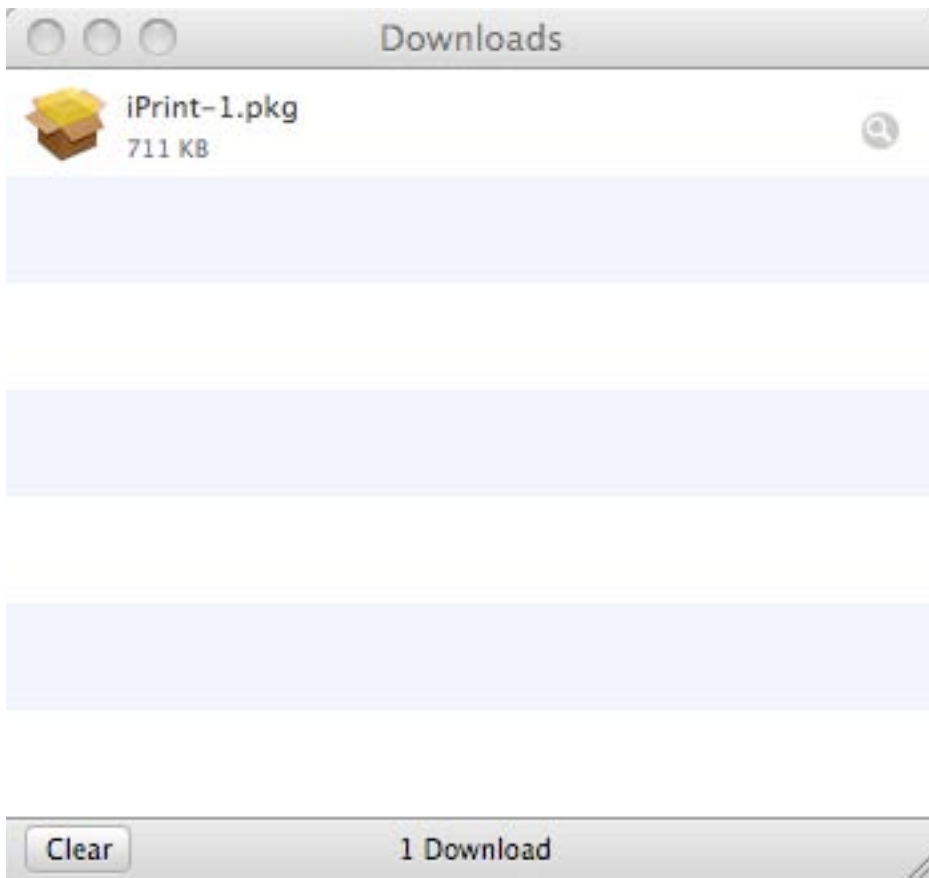


Adding the iPrint client program to Mac OS X

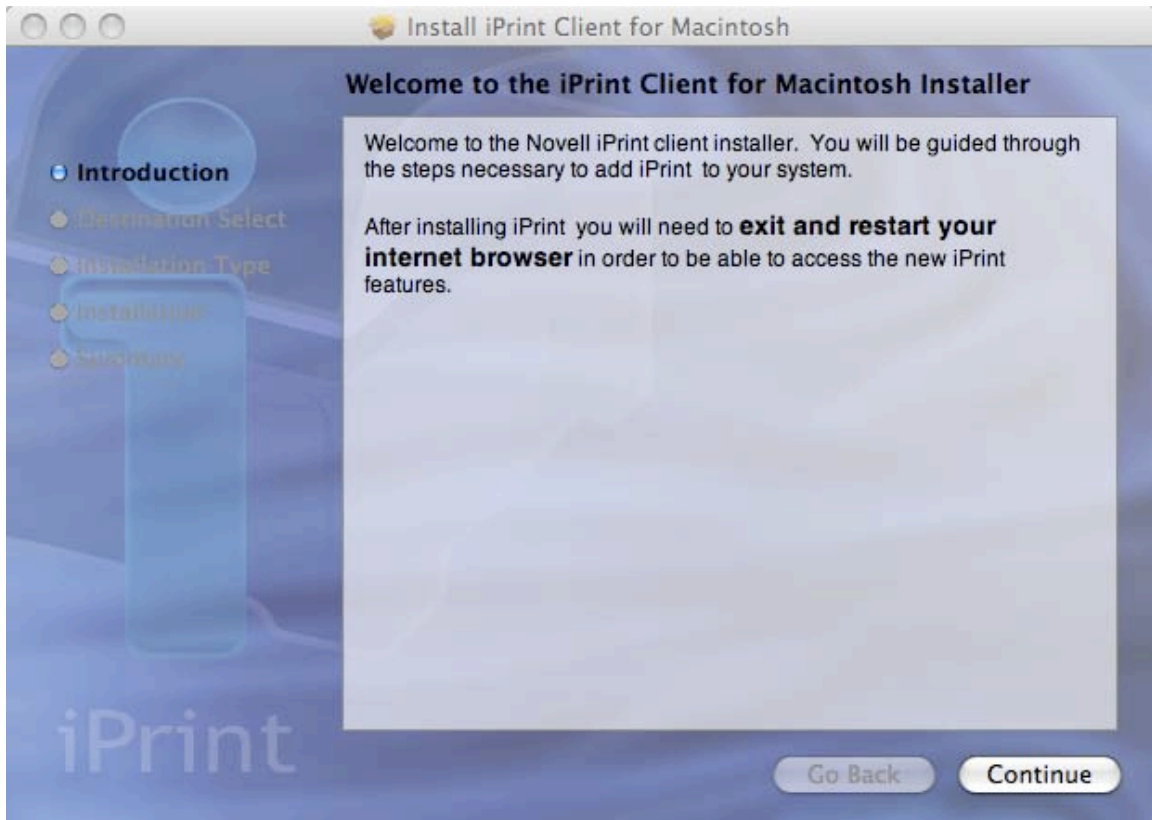
Open the Safari browser, and go to the location: <http://lawprint.law.duke.edu/ipp>



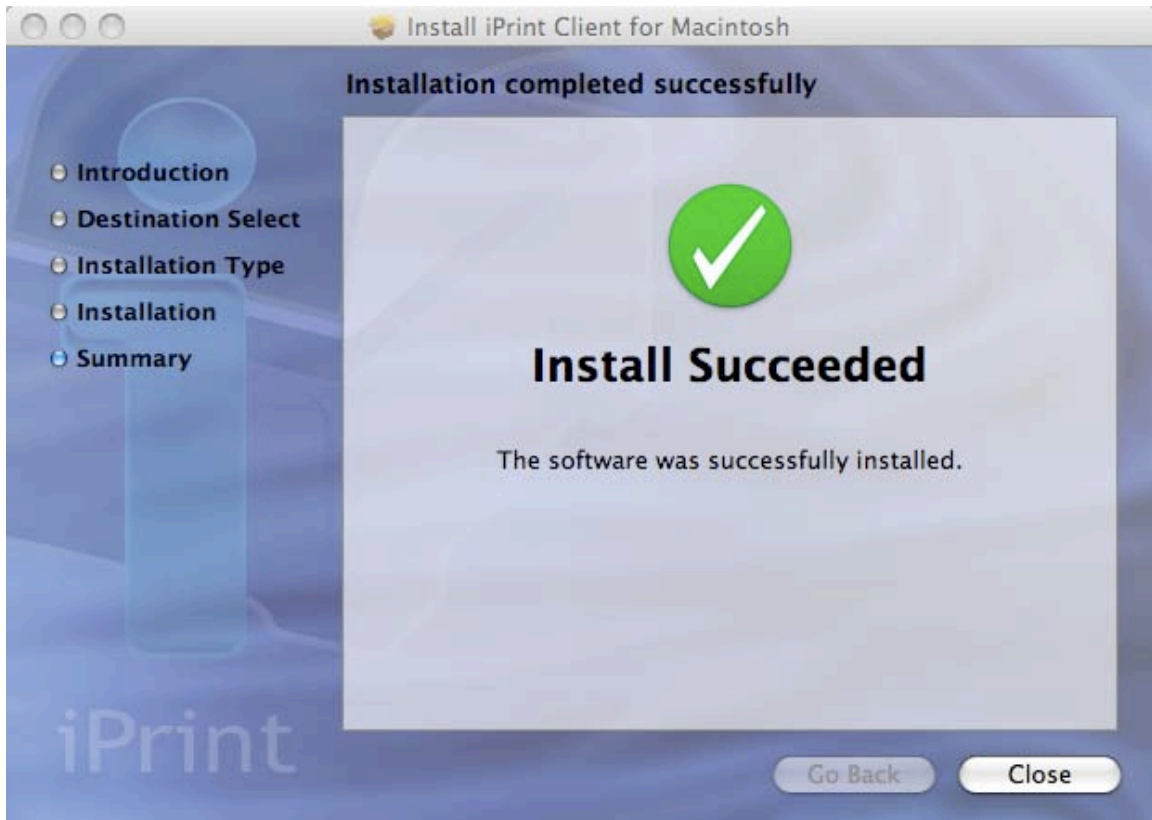
Click on the “Install IPRINT Client” link and a Mac DMG file will be downloaded.



If the disk image file doesn't auto-start the installation, double click the icon and you should see the installer.



Press CONTINUE, and then press INSTALL. The installer will prompt you for your Mac computer user password (this is what you use to log into the laptop). When it completes you should see a big Green OK.



After pressing the CLOSE button on the installation box, you MUST quit the Safari browser!!!!

You should now have a small iPrint icon on the top menu bar, with no printers currently attached via iPrint.

Installing printers once the iPrint client program has been installed.

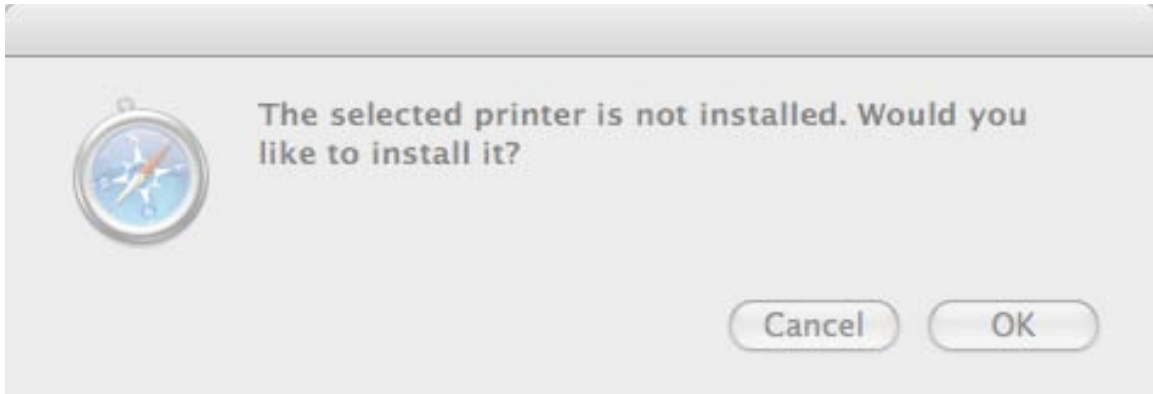
Open the Safari web browser and go to the Law School web site, Student Printing page:

<http://www.law.duke.edu/computing/printing>

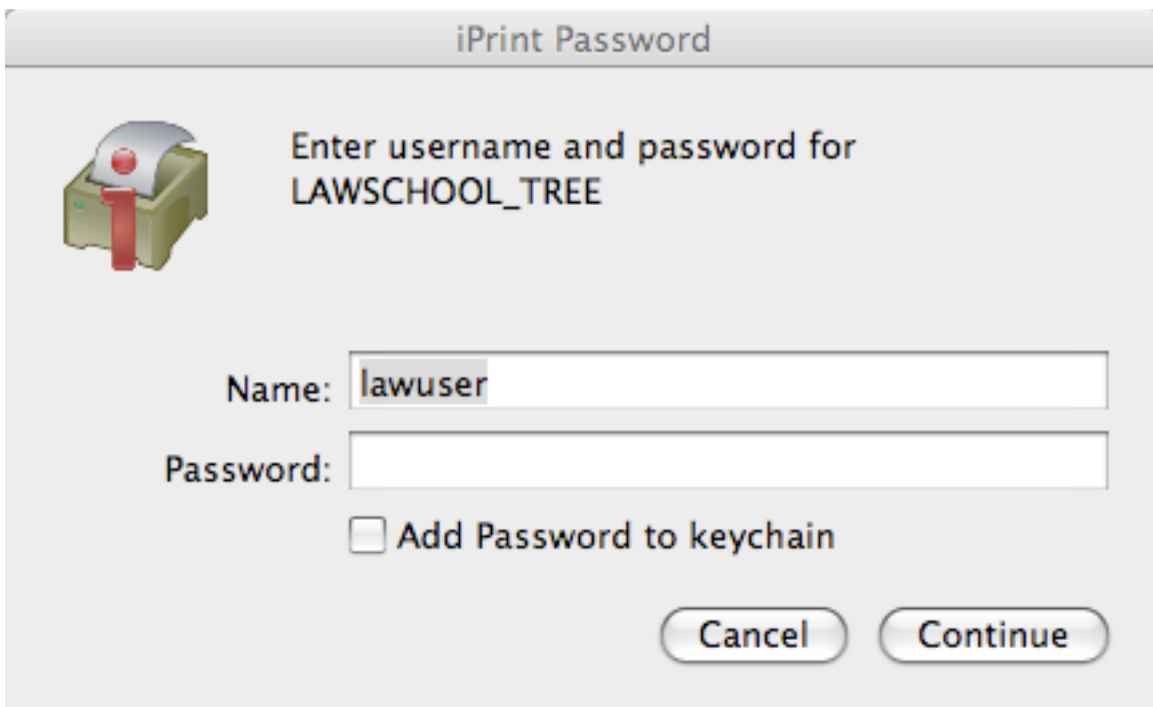
The screenshot shows the 'Student Printing in the Law School' page. The main content area is titled 'Student Printing in the Law School' and includes a section for 'Law Library iPrint Printers'. This section lists four printers: Law Library 1B, Law Library 2B, Law Library 3B, and Law Library 4B. Each printer has a link to 'Install Printer Law Library [number]'. To the right, the 'Printer Status' section displays a table of printer names and their statuses. The status is indicated by a green circle (online) or a red circle (offline). The printer names listed are DLS-PRTL1B1B, DLS-PRTL1B2B, DLS-PRTL1B3B, DLS-PRTL1B4B, LEVEL2HP9040, PRINTER_1A, PRINTER_2A, PRINTER_3A, and PRINTER_4A. Below the status table is the 'Printer Information' section, which lists capabilities such as Manual Feeder, Duplex output, and supported operating systems (Apple Mac OS X 10.5, 10.6 (Intel), Microsoft Windows XP sp3 (32 bit), Microsoft Windows Vista (32 and 64 bit), and Microsoft Windows 7 (32 and 64 bit)).

On that page is a section for the current printers managed by iPrint, you can click on any of the “Install this printer” links for these printers. This tutorial will now demonstrate installing Printer DLS-PRTL1B3B.

Click on the link under printer DLS-PRTL1B3B labeled “Install this printer”. You should see a pop-up window that confirms that you would like to install the printer. Press OK.



You will be prompted for your LAWID and password, enter them in the dialog box and choose to "Add Password to keychain".



Once the printer is added, a confirmation message will be displayed.



This message indicates that the selected printer was correctly configured. When you hit OK, your Safari browser will be closed automatically and immediately.

You can now view your printers through the System Preferences.

