

How to Install ePrint Law Software for Windows

1. Visit <http://www.law.duke.edu/computing/download/downloadlist>
2. Select the *Law School ePrint Printer Driver* link for Windows

DUKE LAW
LIBRARY & TECHNOLOGY

Duke Law > Library & Technology > Academic Technologies > Computing for Students > Download Software

Academic Technologies
Classrooms
Computing for Students
Orientation for New Students
Network Credentials: NetID and LawID
Computing Equipment
Network Access - Wifi and Wired
E-mail and Mailing Lists
Student Printing in the Law School
Download Software
Opening or Converting WordPerfect Files
Microsoft Site License - Information
NetWare Network Files
Off-Campus Access
Prospective Students
Instructions for Using Electronic Bluebook (EBB)
Computing for Faculty and Staff
Computing Security and Usage FAQ
Help Desk
Media Policies and Forms
Production Gallery
Teaching with Technology Staff

Goodson Law Library
Open Access at Duke Law
Help Options

Download Software

Software for Members of the Law School Community

Law School Computing Services and Duke University's Office of Information Technology provide site licensed software to members of the law school community. To download the software, you will need to authenticate with either your LawID, for software provided by Computing Services, or your NetID, for software provided by OIT. Available software, including recommended software provided by its vendors for public download, is listed below.

Novell NetWare, iPrint and ePrint Clients

- Novell Client for Windows Vista 2.0 - LawID
- Novell NetWare Client for Windows XP/2000 - LawID
- **Law School ePrint Printer Driver for Windows - LawID**
- Law School ePrint Printer Driver for Mac OS X - LawID
- Law School iPrint Client for Students

Exam Software

- Electronic Bluebook Information Page

Word Processing and Office Productivity

- Microsoft Office for Mac OS and Windows - see also our Info Page
- Corel WordPerfect Office X3 for Windows - LawID - CD-ROM Image File
- WordPerfect CD Serial Number - LAWID
- OpenOffice for Windows - External Site
- NeoOffice for Macintosh - External Site

Anti-virus

- McAfee VirusScan - NetID

Media Players, Readers and Utilities

3. Enter your LawID username and password and click "submit."

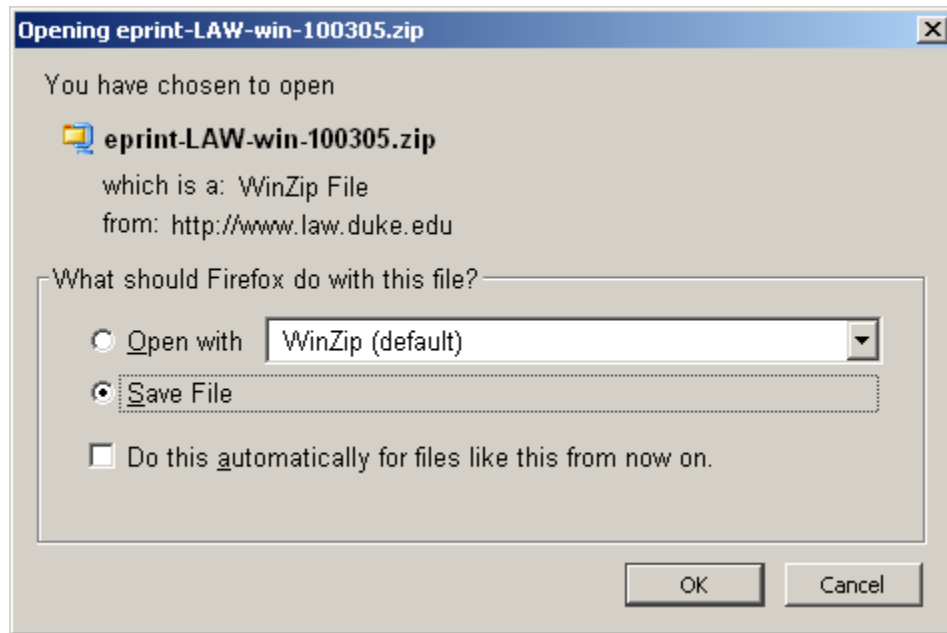
Securely Login to Duke Law

Please use your LawID and password. This is the name and password you use to log into office or library carrel computers.

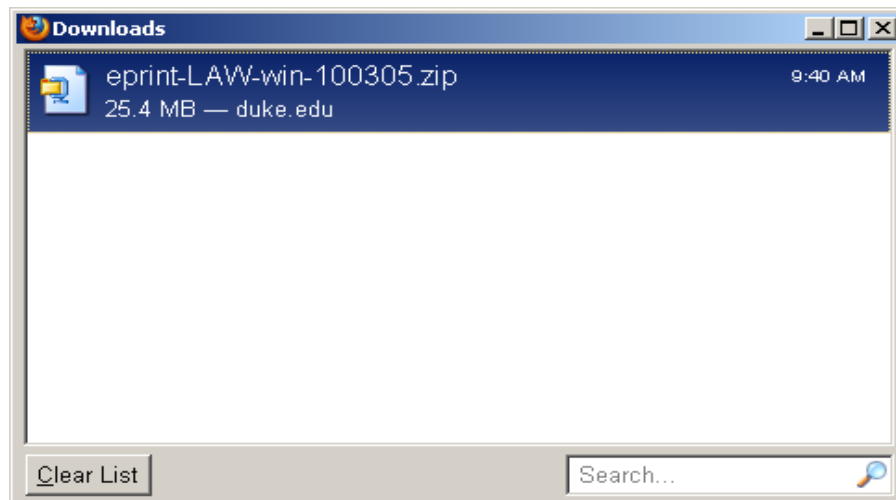
Username:

Password:

4. After your credentials are entered, the following box will appear. Select “Save File” then click “OK.”



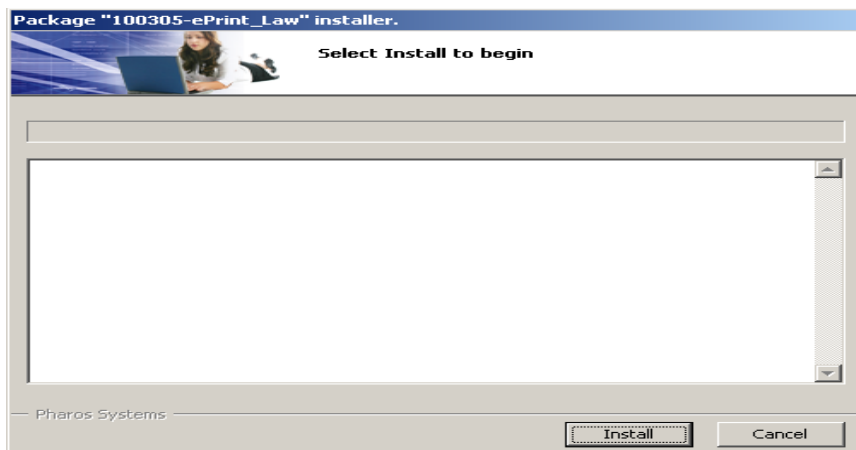
5. The saved file should be unzipped with your default Zip application (i.e. WinZip or WinRAR). Double-click it to unzip the file.



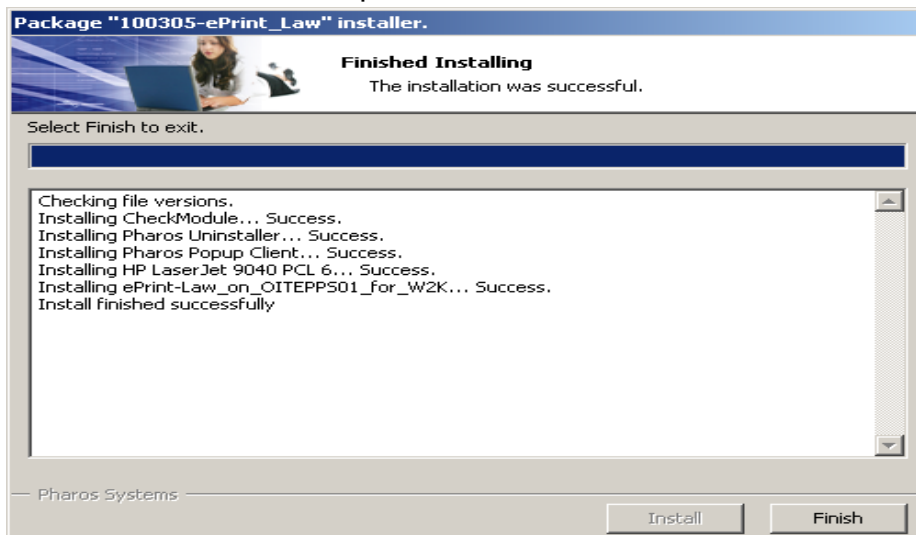
6. Resulting from the extraction of the compressed file, double-click the .exe file

7. Double-click the .exe file

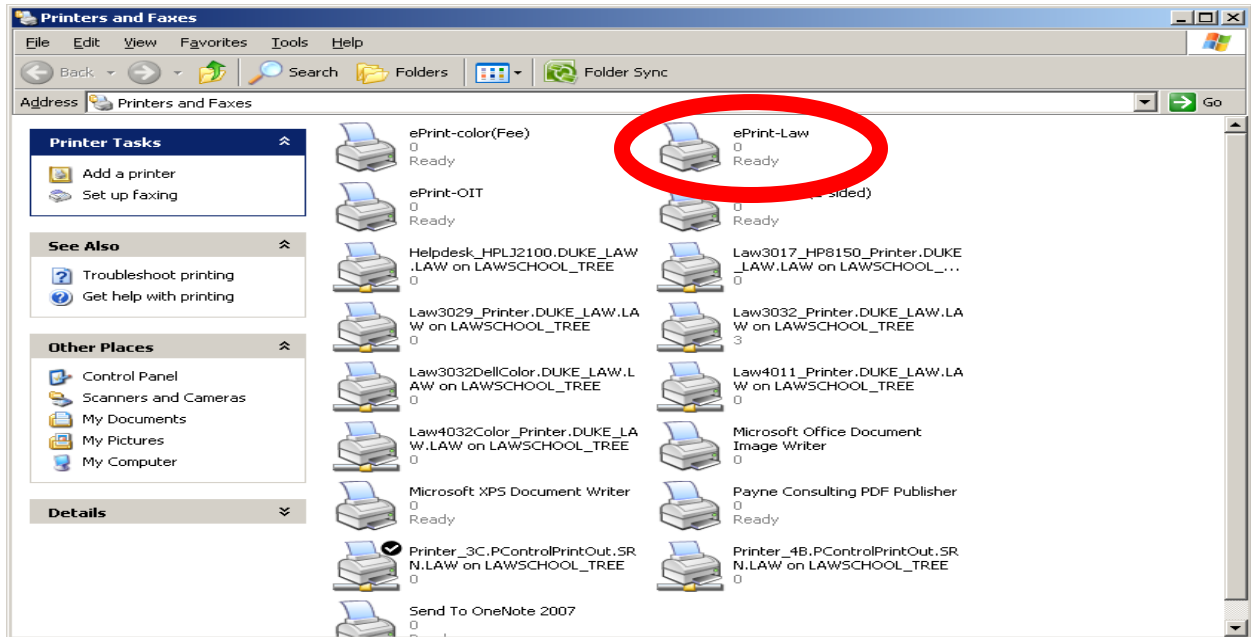
8. Click "Install" to begin the software install.



9. When the installer is complete, click "Finish."



10. The installation can be verified by looking at your list of printers



or

In the drop down list of the print dialog box

